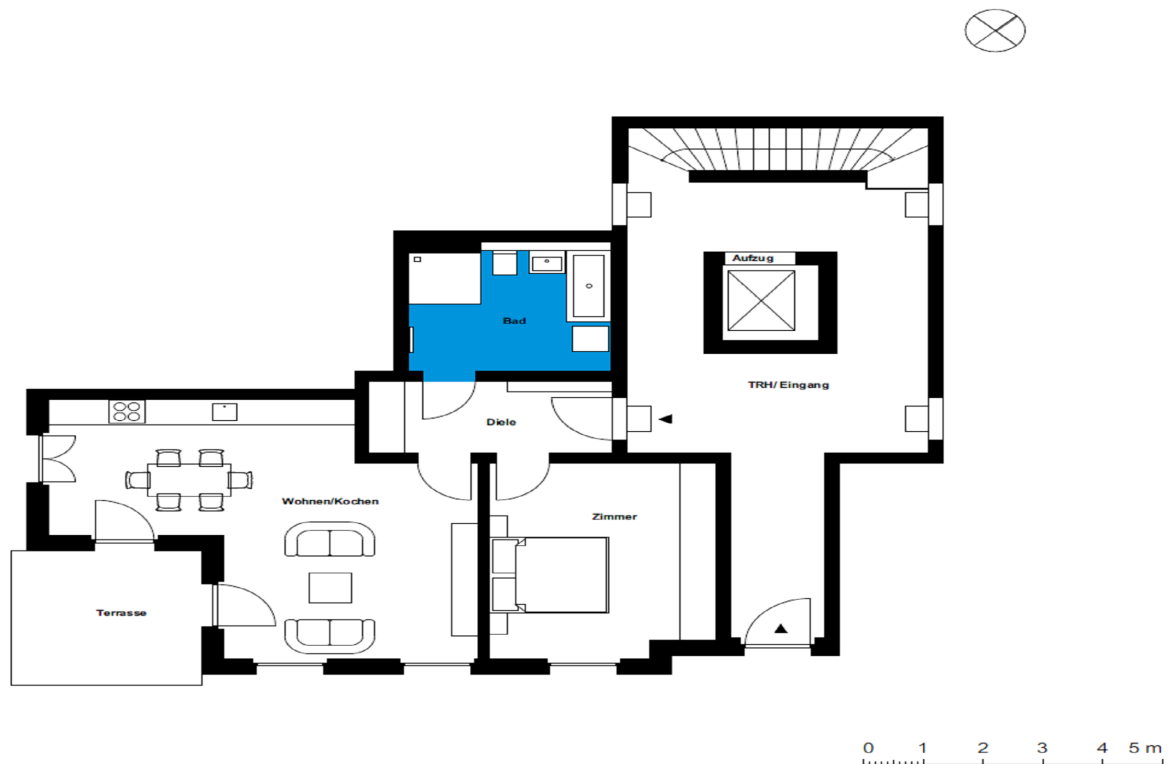


Ahornhöfe - Wohnhäuser | multi-family house 4 | unit 01

Living in the Ahornhöfe

Ahornweg 2, 14547 Beelitz-Heilstätten



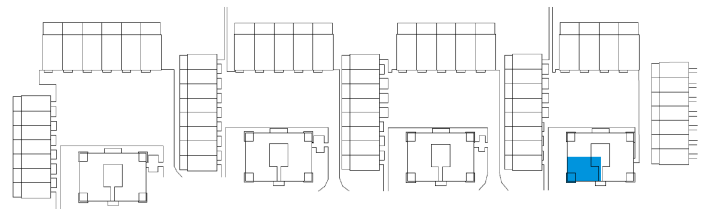
1 room | ground floor m²

Hall	6.47
Bathroom	10.05
Eat-in kitchen	32.4
Room	17.14

Net living area 66.06

Terrace (50%) 5.17

Total living area 71.23



The image and plan material serves the tentative illustration of the project. Deviations in a later planning stage are explicitly reserved. Small variations concerning the areas are possible within a floor plan type. All dimensions are approximate. Due to technical requirements, partial areas can possibly be separated, and ceilings can be suspended.

The terraces and balconies are counted towards 50%.