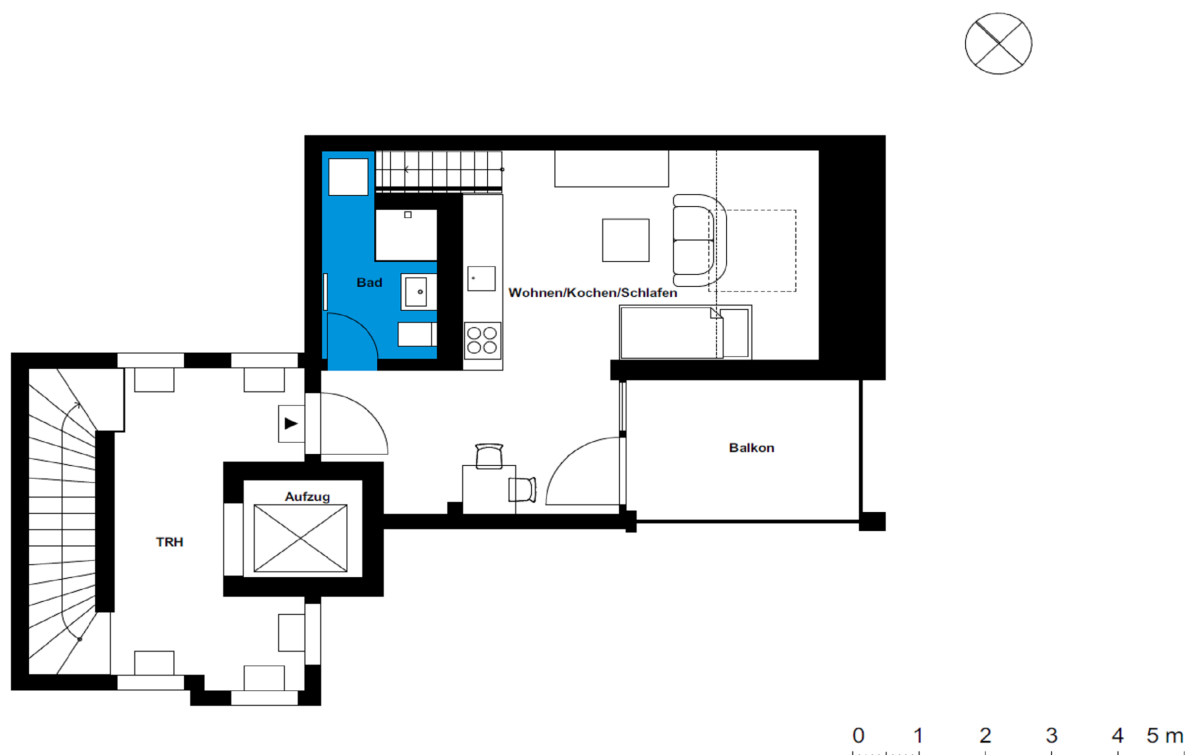


Ahornhöfe - Wohnhäuser | multi-family house 3 | unit 20

Living in the Ahornhöfe

Ahornweg 8, 14547 Beelitz-Heilstätten



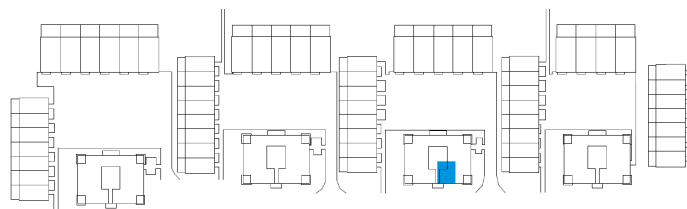
1 room | attic m²

| | |
|----------------|-------|
| Bathroom | 5.34 |
| Eat-in kitchen | 23.43 |
| Pantry | 19.24 |

Net living area 48.01

Winter garden 4.135

Total living area 52.145



The image and plan material serves the tentative illustration of the project. Deviations in a later planning stage are explicitly reserved. Small variations concerning the areas are possible within a floor plan type. All dimensions are approximate. Due to technical requirements, partial areas can possibly be separated, and ceilings can be suspended.

The terraces and balconies are counted towards 50%.