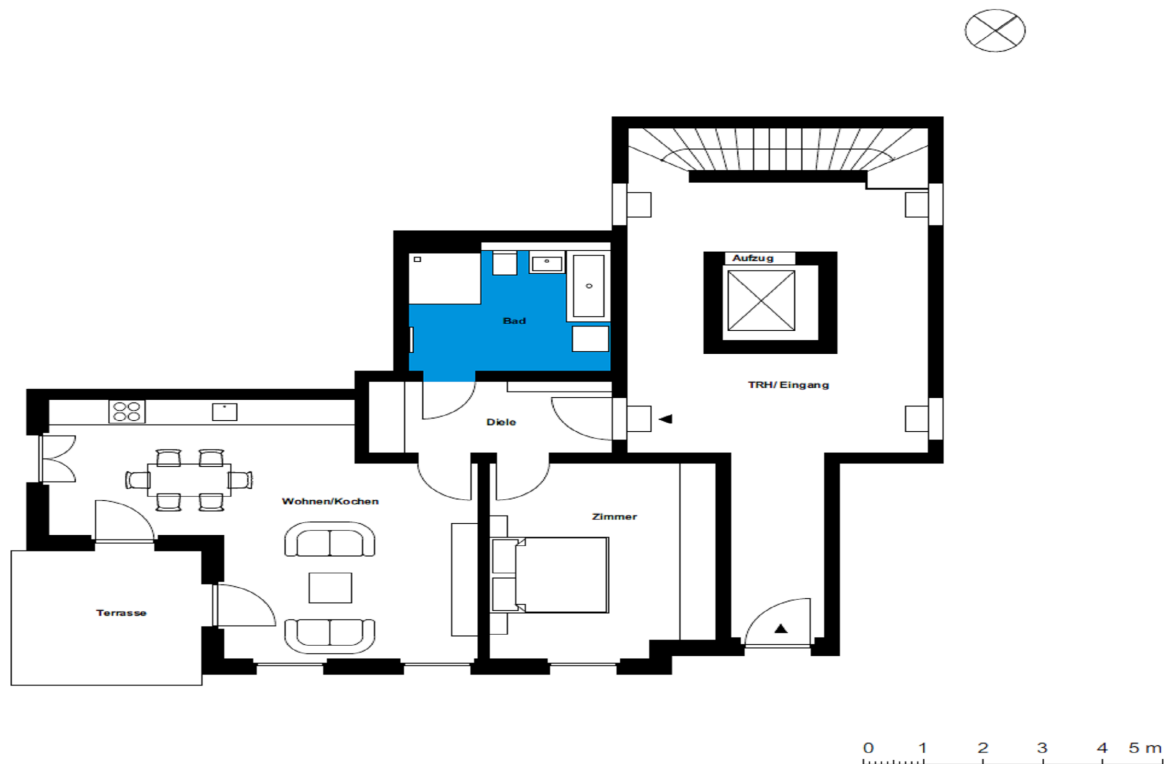


# Ahornhöfe - Wohnhäuser | multi-family house 2 | unit 01

Living in the Ahornhöfe

Ahornweg 14, 14547 Beelitz-Heilstätten



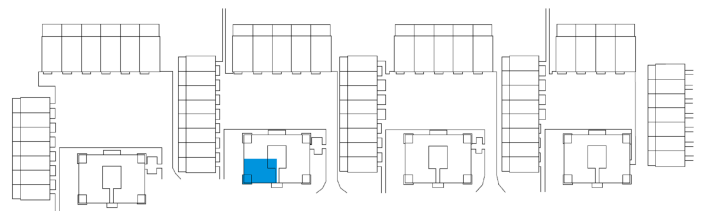
## 1 room | ground floor m<sup>2</sup>

Hall	6.47
Bathroom	10.05
Eat-in kitchen	32.4
Room	17.14

Net living area 66.06

Terrace (50%) 5.17

**Total living area 71.23**



The image and plan material serves the tentative illustration of the project. Deviations in a later planning stage are explicitly reserved. Small variations concerning the areas are possible within a floor plan type. All dimensions are approximate. Due to technical requirements, partial areas can possibly be separated, and ceilings can be suspended.

The terraces and balconies are counted towards 50%.