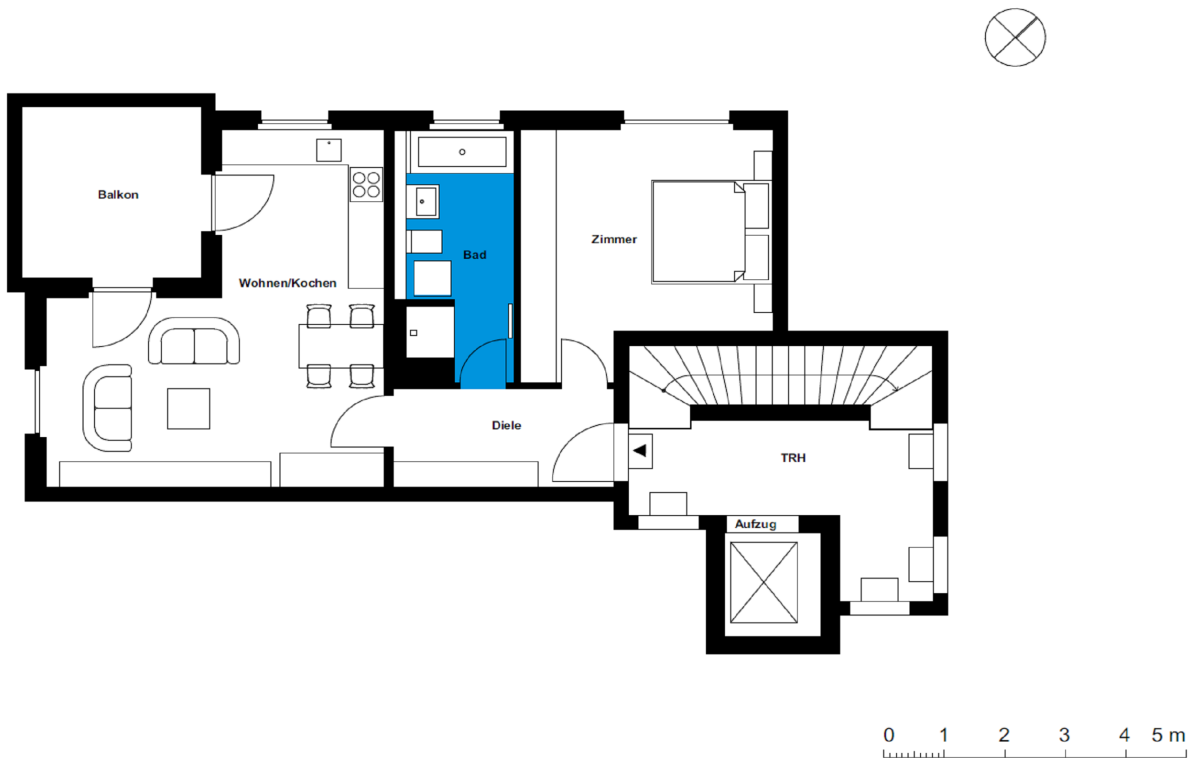
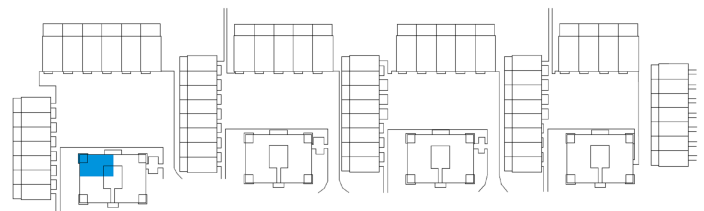


# Ahornhöfe - Wohnhäuser | multi-family house 1 | unit 06

Living in the Ahornhöfe  
 Ahornweg 20, 14547 Beelitz-Heilstätten



1 room   first floor	m <sup>2</sup>
Hall	6.22
Bathroom	7.94
Eat-in kitchen	26.3
Room	16.06
<b>Net living area</b>	<b>56.25</b>
Winter garden	4.695
<b>Total living area</b>	<b>61.215</b>



The image and plan material serves the tentative illustration of the project. Deviations in a later planning stage are explicitly reserved. Small variations concerning the areas are possible within a floor plan type. All dimensions are approximate. Due to technical requirements, partial areas can possibly be separated, and ceilings can be suspended.

The terraces and balconies are counted towards 50%.