

# Ahornhöfe - Scheunen & Remisen | carriage house 5 | house G

Living in the Ahornhöfe

Am Lindensteg 6 G, 14547 Beelitz-Heilstätten



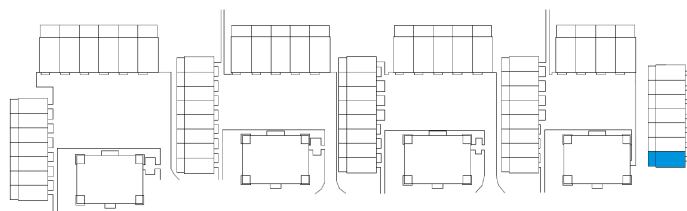
## 3 rooms | m<sup>2</sup>

Hall	10.04
Corridor	4.85
Bathroom 1	3.41
Bathroom 2	12.79
Eat-in kitchen	26.95
Kitchen	6.85
Storeroom	5.86
Room 1	17.91
Room 2	17.93
Room 3	13.26

Net living area 119.85

Terrace (50%) 7.44

**Total living area 127.29**



The image and plan material serves the tentative illustration of the project. Deviations in a later planning stage are explicitly reserved. Small variations concerning the areas are possible within a floor plan type. All dimensions are approximate. Due to technical requirements, partial areas can possibly be separated, and ceilings can be suspended.

The terraces and balconies are counted towards 50%.