

# Ahornhöfe - Scheunen & Remisen | carriage house 3 |

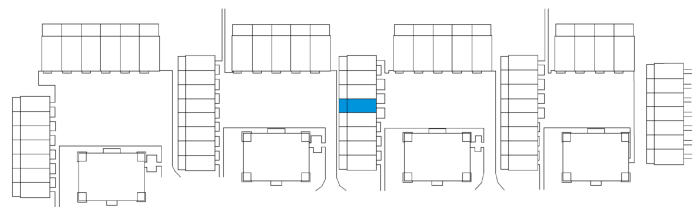
## house E

Living in the Ahornhöfe

Ahornweg 12 E, 14547 Beelitz-Heilstätten



3 rooms	m <sup>2</sup>
Hall	10.04
Corridor	4.85
Bathroom 1	3.41
Bathroom 2	12.79
Eat-in kitchen	26.95
Kitchen	6.85
Storeroom	5.86
Room 1	17.91
Room 2	17.93
Room 3	13.26
<b>Net living area</b>	<b>119.85</b>
Terrace (50%)	7.44
<b>Total living area</b>	<b>127.29</b>



The image and plan material serves the tentative illustration of the project. Deviations in a later planning stage are explicitly reserved. Small variations concerning the areas are possible within a floor plan type. All dimensions are approximate. Due to technical requirements, partial areas can possibly be separated, and ceilings can be suspended.

The terraces and balconies are counted towards 50%.