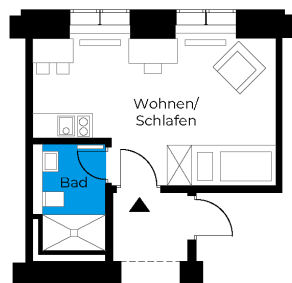
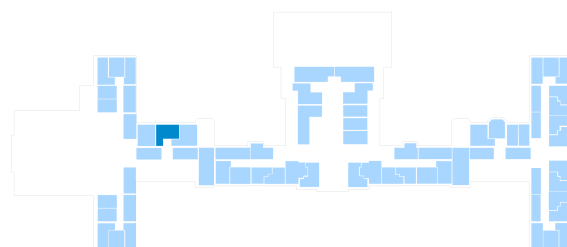


# Beelitz-Waldresidenz | Unit 119

Living in a historical monument  
 Dr. Herrmann-Straße 4g, 14547 Beelitz-Heilstätten



<b>1 room   first floor</b>	<b>m<sup>2</sup></b>
Bathroom	4.71
Living room	20
<b>Net living area</b>	<b>24.71</b>
<b>Total living area</b>	<b>24.71</b>



The image and plan material serves the tentative illustration of the project. Deviations in a later planning stage are explicitly reserved. Small variations concerning the areas are possible within a floor plan type. All dimensions are approximate. Due to technical requirements, partial areas can possibly be separated, and ceilings can be suspended.

The terraces and balconies are counted towards 50%.