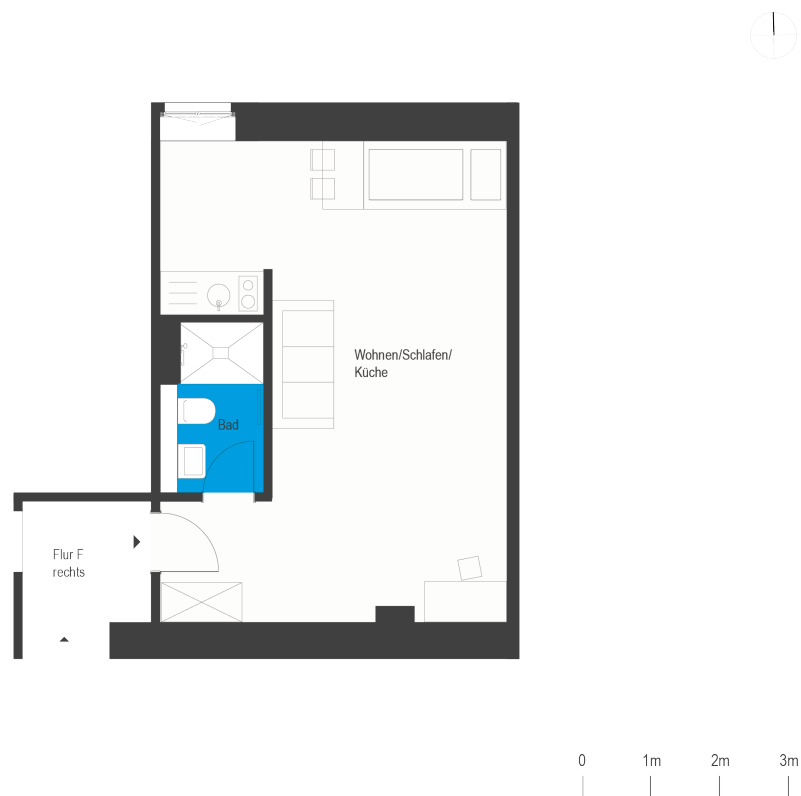


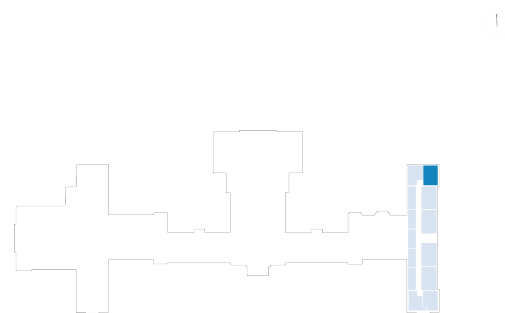
Beelitz-Waldresidenz | Unit 102

Living in a historical monument

Dr. Herrmann-Straße 4b, 14547 Beelitz-Heilstätten



1 room attic	m²
Bathroom	3.47
Living room	30.26
<u>Net living area</u>	<u>33.73</u>
 <u>Total living area</u>	 <u>33.73</u>



The image and plan material serves the tentative illustration of the project. Deviations in a later planning stage are explicitly reserved. Small variations concerning the areas are possible within a floor plan type. All dimensions are approximate. Due to technical requirements, partial areas can possibly be separated, and ceilings can be suspended.

The terraces and balconies are counted towards 50%.