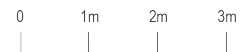
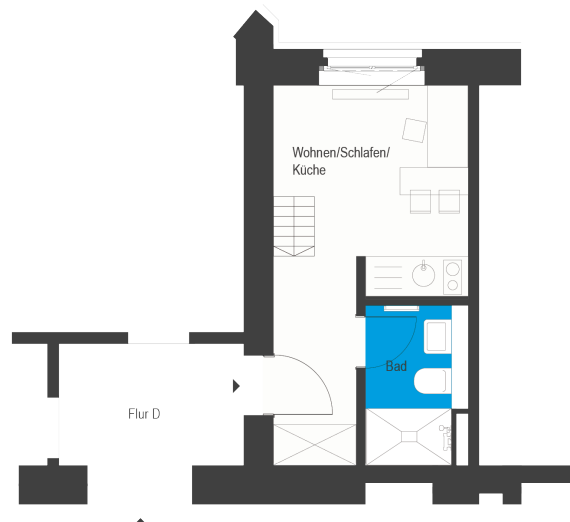
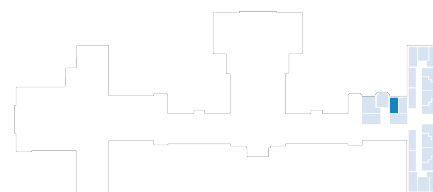


Beelitz-Waldresidenz | Unit 62

Living in a historical monument
 Dr. Herrmann-Straße 4b, 14547 Beelitz-Heilstätten



| 1 room first floor | m ² |
|--------------------------|----------------|
| Bathroom | 3.3 |
| Living room | 11.93 |
| Pantry | 3.87 |
| Net living area | 19.1 |
| Total living area | 19.1 |



The image and plan material serves the tentative illustration of the project. Deviations in a later planning stage are explicitly reserved. Small variations concerning the areas are possible within a floor plan type. All dimensions are approximate. Due to technical requirements, partial areas can possibly be separated, and ceilings can be suspended.

The terraces and balconies are counted towards 50%.