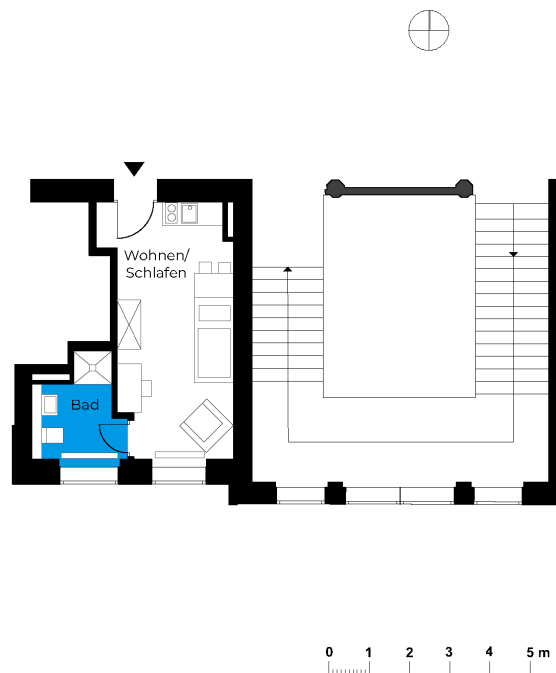


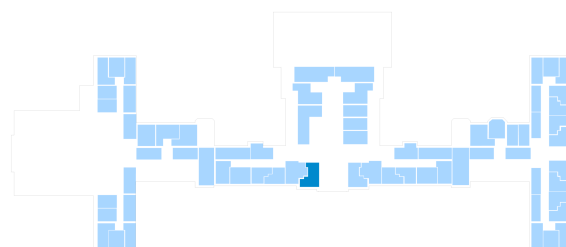
Beelitz-Waldresidenz | Unit 41

Living in a historical monument

Dr. Herrmann-Straße 4, 14547 Beelitz-Heilstätten



1 room first floor	m ²
Bathroom	4.96
Living room	18.75
Net living area	23.71
Total living area	23.71



The image and plan material serves the tentative illustration of the project. Deviations in a later planning stage are explicitly reserved. Small variations concerning the areas are possible within a floor plan type. All dimensions are approximate. Due to technical requirements, partial areas can possibly be separated, and ceilings can be suspended.

The terraces and balconies are counted towards 50%.