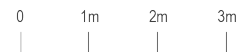
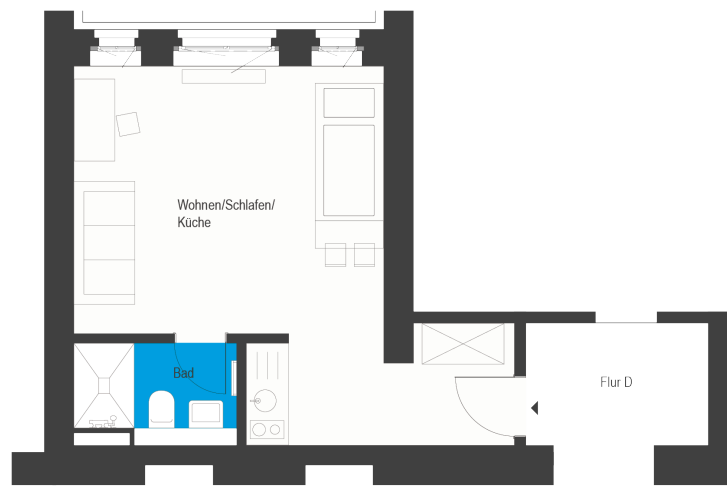


# Beelitz-Waldresidenz | Unit 18

Living in a historical monument

Dr. Herrmann-Straße 4a, 14547 Beelitz-Heilstätten

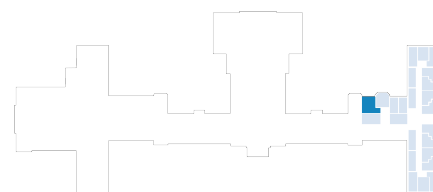


**1 room | ground floor** **m<sup>2</sup>**

Bathroom 3.38  
Living room 24.24

Net living area 27.62

**Total living area 27.62**



The image and plan material serves the tentative illustration of the project. Deviations in a later planning stage are explicitly reserved. Small variations concerning the areas are possible within a floor plan type. All dimensions are approximate. Due to technical requirements, partial areas can possibly be separated, and ceilings can be suspended.

The terraces and balconies are counted towards 50%.