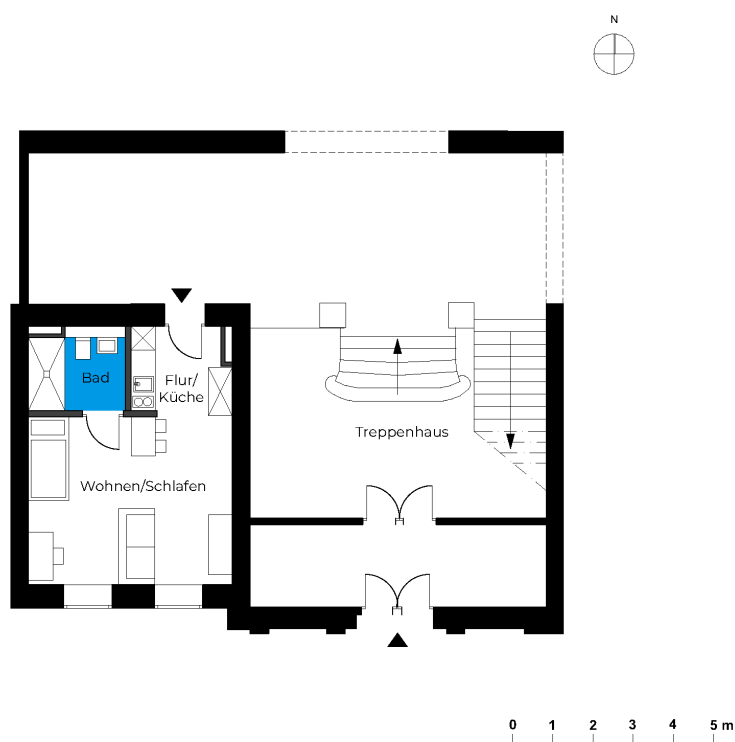


Beelitz-Waldresidenz | Unit 1

Living in a historical monument

Dr. Herrmann-Straße 4, 14547 Beelitz-Heilstätten

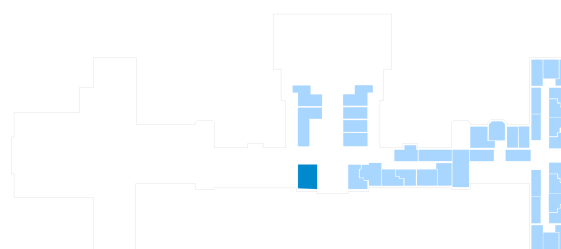


1 room flat | ground floor m²

Corridor	5.24
Bathroom	4.8
Living room	21.26

Net living area 31.3

Total living area 31.3



The image and plan material serves the tentative illustration of the project. Deviations in a later planning stage are explicitly reserved. Small variations concerning the areas are possible within a floor plan type. All dimensions are approximate. Due to technical requirements, partial areas can possibly be separated, and ceilings can be suspended.

The terraces and balconies are counted towards 50%.