

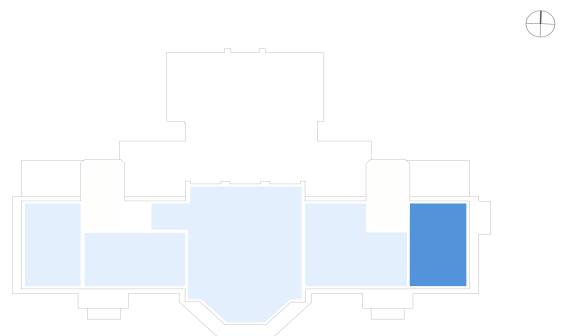
Beelitz-Küchengebäude | Unit 10

Living in the historic "Küchengebäude"

Straße nach Fichtenwalde 15A, 14557 Beelitz-Heilstätten



1 room attic	m ²
Hall	3.78
Bathroom	3.03
Kitchen	7.96
Living room	31.84
Room	8.71
Net living area	55.32
Terrace (50%)	5
Total living area	60.32



The image and plan material serves the tentative illustration of the project. Deviations in a later planning stage are explicitly reserved. Small variations concerning the areas are possible within a floor plan type. All dimensions are approximate. Due to technical requirements, partial areas can possibly be separated, and ceilings can be suspended.

The terraces and balconies are counted towards 50%.