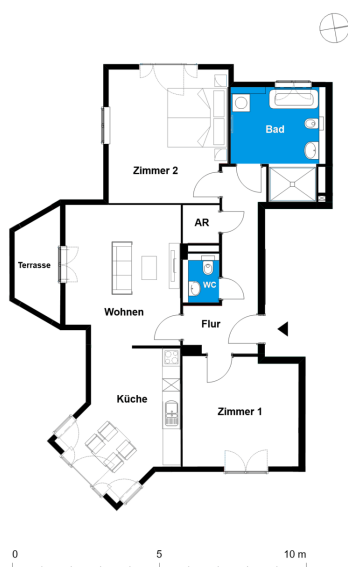


# Wohnen am Stadtplatz | Villa Robinia Unit 5

Parkside Mansions  
Karl-Koopmann-Platz 1, 14547 Beelitz-Heilstätten



## 3 rooms | second floor m<sup>2</sup>

Corridor	10.09
WC	2.03
Bathroom	9.75
Kitchen	16.56
Storeroom	1.48
Living room	17.9
Room 1	11.62
Room 2	17.42

---

Net living area 86.85

Terrace (50%) 1.91

---

**Total living area 88.76**



The image and plan material serves the tentative illustration of the project. Deviations in a later planning stage are explicitly reserved. Small variations concerning the areas are possible within a floor plan type. All dimensions are approximate. Due to technical requirements, partial areas can possibly be separated, and ceilings can be suspended.

The terraces and balconies are counted towards 50%.