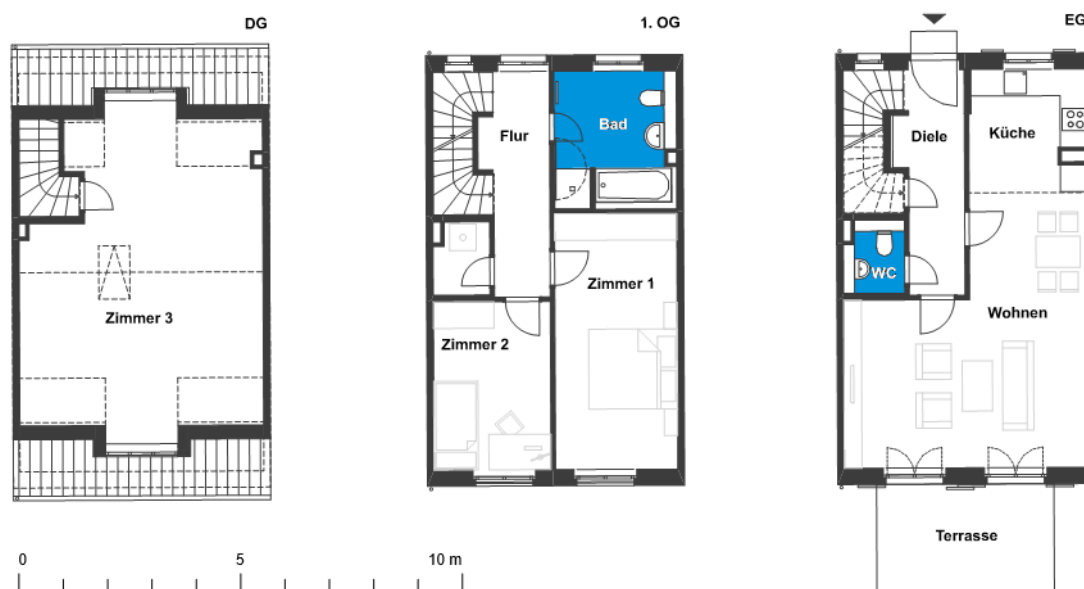


# Wohnen an der Waldseeallee | Townhouse 53

Beautiful newly built townhouses for first occupancy

Waldseeallee 26, 14547 Beelitz-Heilstätten



## 4 rooms | m<sup>2</sup>

Hall	7.06
Corridor	6.87
WC	2.14
Bathroom	8.26
Utility room	1.95
Kitchen	7.05
Storeroom	1.97
Living room	27.1
Room 1	15.9
Room 2	9.87
Room 3	32.23

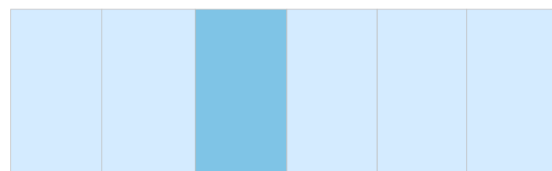
Net living area 120.4

Terrace (50%) 5

**Total living area 125.4**



Waldseeallee



The image and plan material serves the tentative illustration of the project. Deviations in a later planning stage are explicitly reserved. Small variations concerning the areas are possible within a floor plan type. All dimensions are approximate. Due to technical requirements, partial areas can possibly be separated, and ceilings can be suspended.

The terraces and balconies are counted towards 50%.