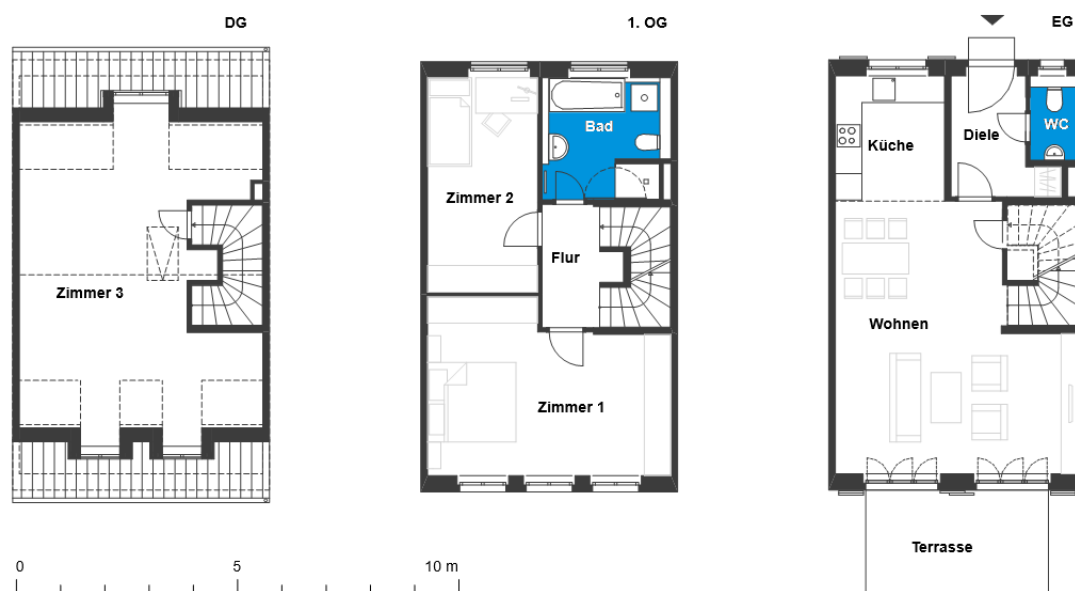


# Wohnen an der Waldseeallee | Townhouse 52

Beautiful newly built townhouses for first occupancy

Waldseeallee 24, 14547 Beelitz-Heilstätten



## 4 rooms | m<sup>2</sup>

Hall	5.13
Corridor	4.06
WC	2.09
Bathroom	7.67
Utility room	2.49
Kitchen	6.96
Living room	28.69
Room 1	19.59
Room 2	12.03
Room 3	29.86

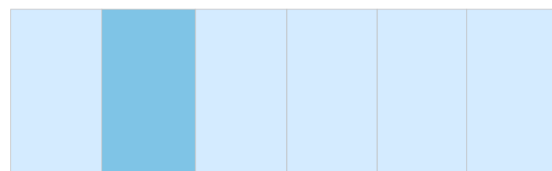
Net living area 118.57

Terrace (50%) 5

**Total living area 123.57**



Waldseeallee



The image and plan material serves the tentative illustration of the project. Deviations in a later planning stage are explicitly reserved. Small variations concerning the areas are possible within a floor plan type. All dimensions are approximate. Due to technical requirements, partial areas can possibly be separated, and ceilings can be suspended.

The terraces and balconies are counted towards 50%.