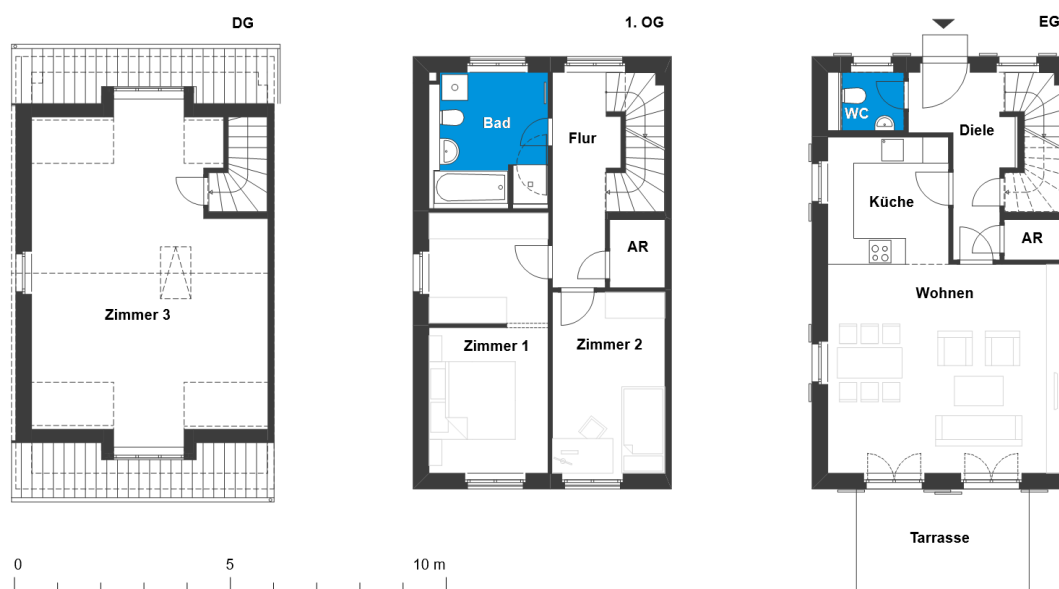


# Wohnen an der Waldseeallee | Townhouse 51

Beautiful newly built townhouses for first occupancy

Waldseeallee 22, 14547 Beelitz-Heilstätten



## 4 rooms | m<sup>2</sup>

Hall	6.74
Corridor	6.57
WC	1.94
Bathroom	8.41
Utility room	1.96
Kitchen	8.23
Storeroom	1.29
Living room	26.27
Room 1	16.44
Room 2	10.8
Room 3	33.96
Pantry	2.02

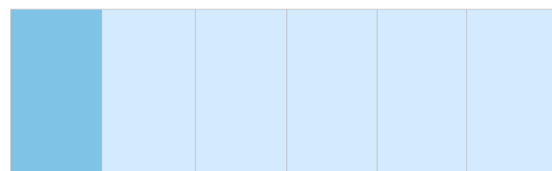
Net living area 124.63

Terrace (50%) 5

**Total living area 129.63**



Waldseeallee



The image and plan material serves the tentative illustration of the project. Deviations in a later planning stage are explicitly reserved. Small variations concerning the areas are possible within a floor plan type. All dimensions are approximate. Due to technical requirements, partial areas can possibly be separated, and ceilings can be suspended.

The terraces and balconies are counted towards 50%.