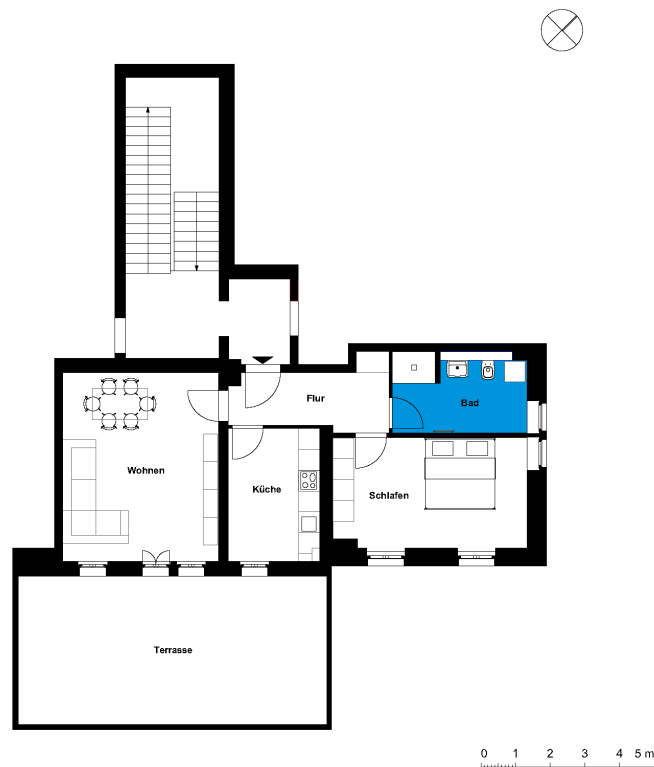


Beelitz-alte Fleischerei | Unit 06

Living in the historic "Fleischereigebäude"

Am alten Jagdstern 5, 14547 Beelitz Heilstätten



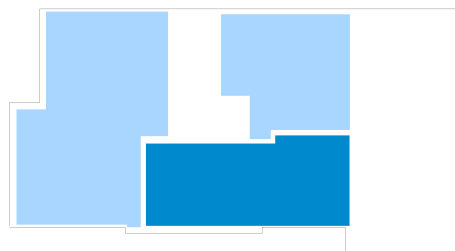
1 room | first floor m²

Corridor	7.47
Bathroom	8.66
Kitchen	9.82
Living room	24.1
Room	17.36

Net living area 67.41

Terrace (50%) 16.37

Total living area 83.77



The image and plan material serves the tentative illustration of the project. Deviations in a later planning stage are explicitly reserved. Small variations concerning the areas are possible within a floor plan type. All dimensions are approximate. Due to technical requirements, partial areas can possibly be separated, and ceilings can be suspended.

The terraces and balconies are counted towards 50%.