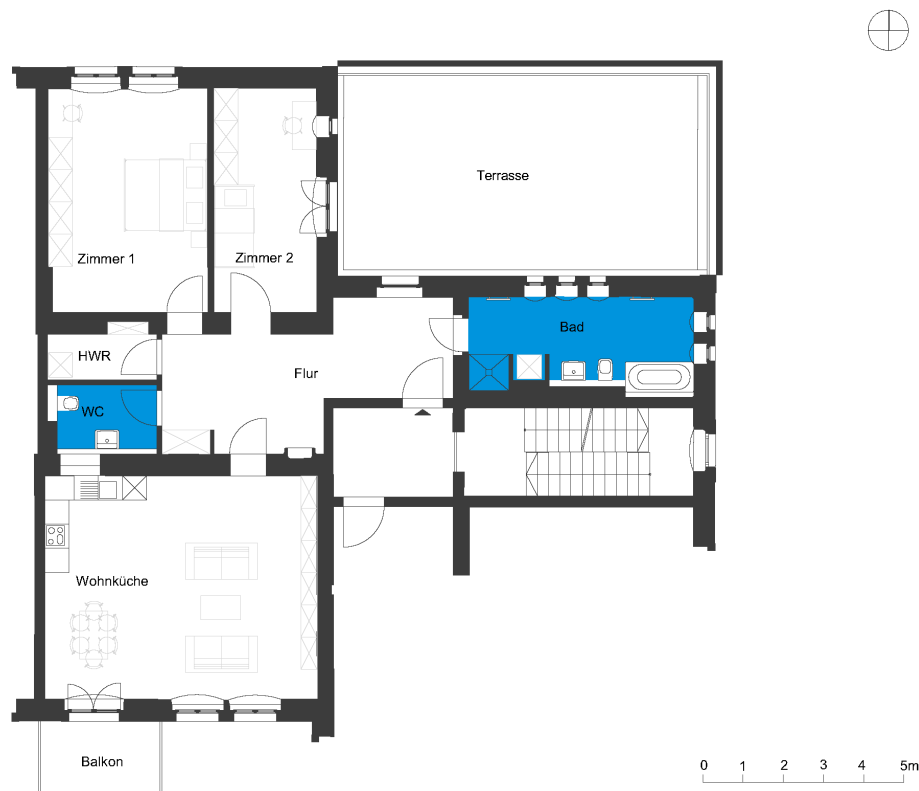


# Verwaltungsgebäude | Unit 12

Straße nach Fichtenwalde 3b, 14547 Beelitz-Heilstätten



## 3 rooms | first floor

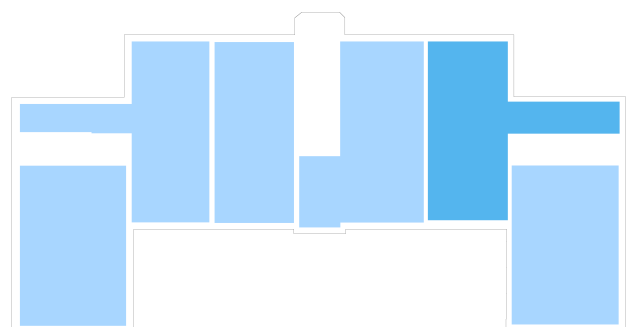
m<sup>2</sup>

Corridor	19.39
WC	3.95
Bathroom	12.54
Eat-in kitchen	37.6
Utility room	3.41
Room 1	21.93
Room 2	14.01

Net living area 112.83

Balcony (50%)	2.7
Terrace (50%)	20.91

**Total living area 136.44**



The image and plan material serves the tentative illustration of the project. Deviations in a later planning stage are explicitly reserved. Small variations concerning the areas are possible within a floor plan type. All dimensions are approximate. Due to technical requirements, partial areas can possibly be separated, and ceilings can be suspended.

The terraces and balconies are counted towards 50%.