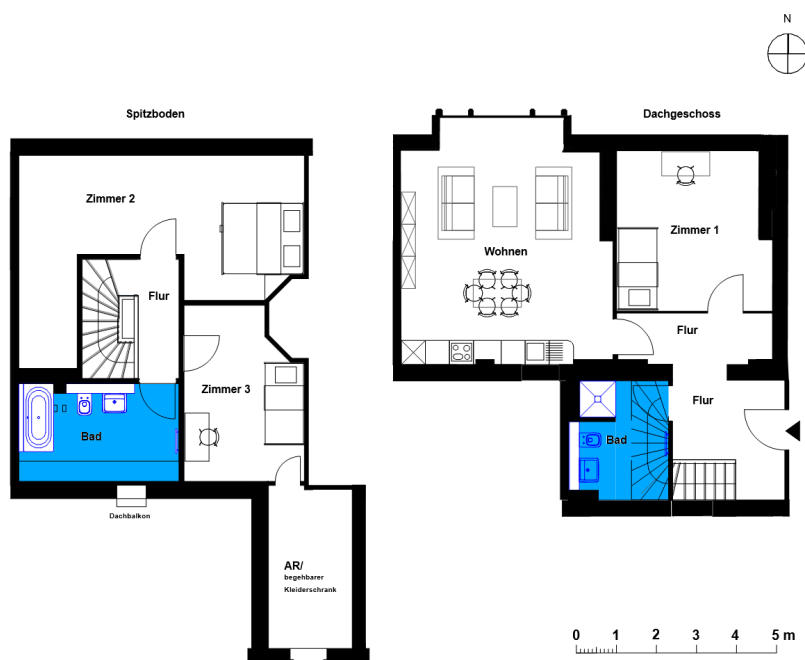


# Verwaltungsgebäude | Unit 16

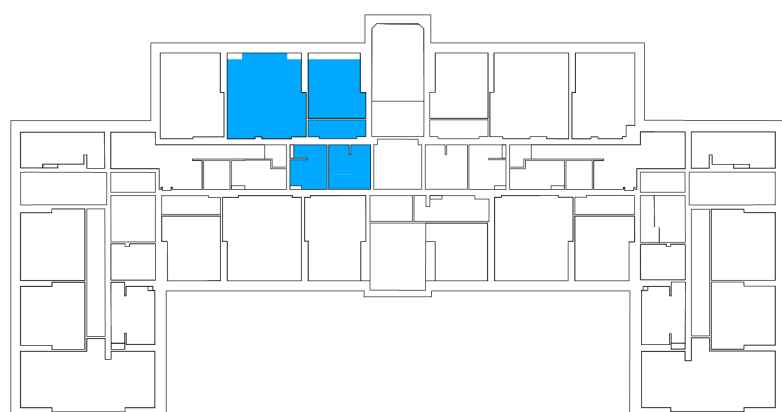
Straße nach Fichtenwalde 3, 14547 Beelitz-Heilstätten



## 4 rooms | top floor m<sup>2</sup>

Hall	6.94
Corridor	7.92
Bathroom 1	6.22
Bathroom 2	7.34
Eat-in kitchen	27.43
Storeroom	3.64
Room 1	14.53
Room 2	21.94
Room 3	9.75
Net living area	105.71

**Total living area 105.71**



The image and plan material serves the tentative illustration of the project. Deviations in a later planning stage are explicitly reserved. Small variations concerning the areas are possible within a floor plan type. All dimensions are approximate. Due to technical requirements, partial areas can possibly be separated, and ceilings can be suspended.

The terraces and balconies are counted towards 50%.