

Verwaltungsgebäude | Unit 4

Straße nach Fichtenwalde 3, 14547 Beelitz-Heilstätten



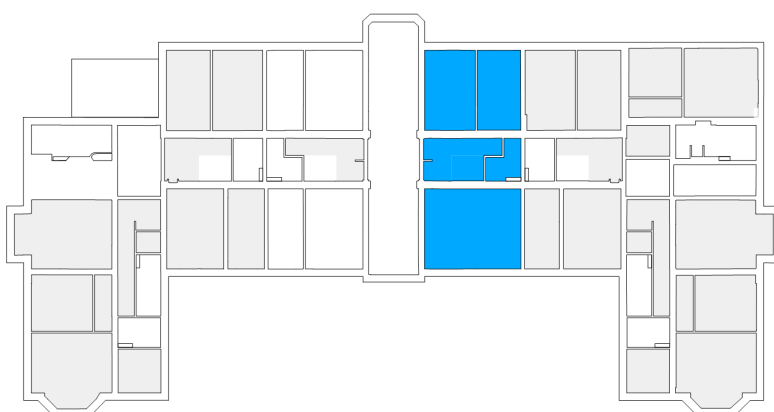
4 rooms | ground floor m²

Hall	9.23
Corridor	7.82
Bathroom 1	5.2
Bathroom 2	7.83
Eat-in kitchen	36.59
Room 1	19.75
Room 2	16.56
Room 3	33.83

Net living area 136.81

Balcony (50%) 2.77

Total living area 139.58



The image and plan material serves the tentative illustration of the project. Deviations in a later planning stage are explicitly reserved. Small variations concerning the areas are possible within a floor plan type. All dimensions are approximate. Due to technical requirements, partial areas can possibly be separated, and ceilings can be suspended.

The terraces and balconies are counted towards 50%.