

# Verwaltungsgebäude | Unit 3

Straße nach Fichtenwalde 3, 14547 Beelitz-Heilstätten



## 4 rooms | ground floor

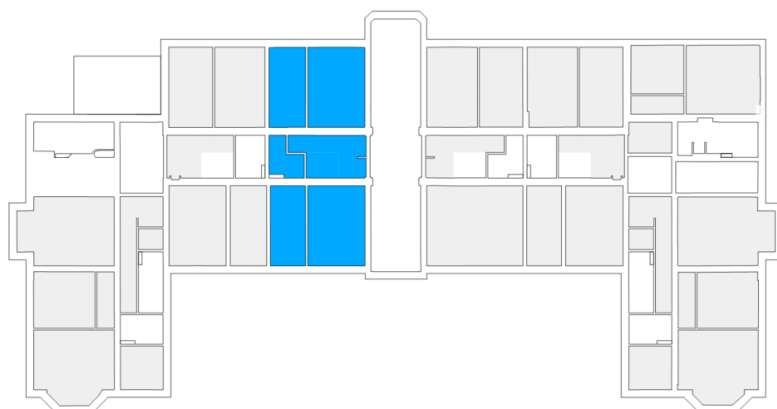
m<sup>2</sup>

Hall	9.58
Corridor	7.78
Bathroom 1	4.46
Bathroom 2	8.33
Eat-in kitchen	36.3
Room 1	14.29
Room 2	21.72
Room 3	33.05

Net living area 135.51

Balcony (50%) 2.85

**Total living area 138.36**



The image and plan material serves the tentative illustration of the project. Deviations in a later planning stage are explicitly reserved. Small variations concerning the areas are possible within a floor plan type. All dimensions are approximate. Due to technical requirements, partial areas can possibly be separated, and ceilings can be suspended.

The terraces and balconies are counted towards 50%.