

Verwaltungsgebäude | Unit 14

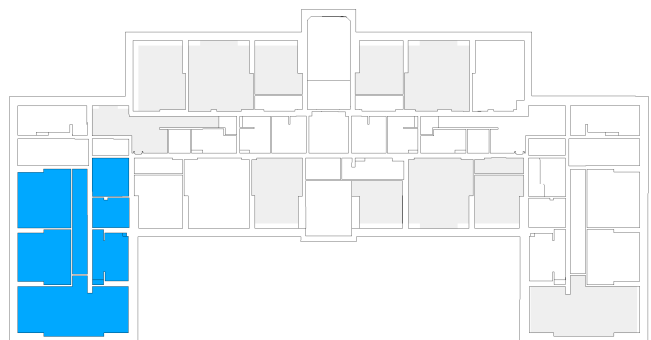
Straße nach Fichtenwalde 3a, 14547 Beelitz-Heilstätten



3 rooms | second floor m²

Corridor	18.26
Bathroom	10.29
Eat-in kitchen	33.43
Storeroom	6.73
Room 1	19.08
Room 2	17.43
Room 3	42.08
Net living area	147.3

Total living area 147.3



The image and plan material serves the tentative illustration of the project. Deviations in a later planning stage are explicitly reserved. Small variations concerning the areas are possible within a floor plan type. All dimensions are approximate. Due to technical requirements, partial areas can possibly be separated, and ceilings can be suspended.

The terraces and balconies are counted towards 50%.